



**India Meteorological Department  
(Ministry of Earth Sciences)**

**BULLETIN NO. 11 (BOB/06/2022)**

**TIME OF ISSUE: 1150 HOURS IST**

**DATED: 16.08.2022**

**FROM: INDIA METEOROLOGICAL DEPARTMENT (FAX NO. 24643965/24699216/24623220)**

**TO: CONTROL ROOM, NDM, MINISTRY OF HOME AFFAIRS (FAX.NO. 23093750)**

**CONTROL ROOM NDMA (FAX.NO. 26701729)**

**CABINET SECRETARIAT (FAX.NO.23012284, 23018638)**

**PS TO HON'BLE MINISTER FOR S & T AND EARTH SCIENCES (FAX NO.23316745)**

**SECRETARY, MOES (FAX NO. 24629777)**

**H.Q. (INTEGRATED DEFENCE STAFF AND CDS) (FAX NO. 23005137/23005147)**

**DIRECTOR GENERAL, DOORDARSHAN (23385843)**

**DIRECTOR GENERAL, AIR (23421105, 23421219)**

**PIB MOES (FAX NO. 23389042)**

**UNI (FAX NO. 23355841)**

**D.G. NATIONAL DISASTER RESPONSE FORCE (NDRF) (FAX NO. 26105912, 2436 3260)**

**DIRECTOR, PUNCTUALITY, INDIAN RAILWAYS (FAX NO. 23388503)**

**CHIEF SECRETARY, GOVT. OF CHATTISGARH (FAX NO. 771-2221206)**

**CHIEF SECRETARY, GOVT. OF JHARKHAND (FAX NO. 651-2400255)**

**CHIEF SECRETARY, GOVT. OF MADHYA PRADESH (FAX NO. 755-2441076)**

**CHIEF SECRETARY, GOVT. OF MAHARASHTRA (FAX NO. 022- 22028594)**

**CHIEF SECRETARY, GUJARAT (FAX NO. 079-23250305)**

**CHIEF SECRETARY, DAMAN & DIU (FAX NO. 0260-2230775)**

**CHIEF SECRETARY, DADRA & NAGAR HAVELI (FAX NO. 0260-2645466)**

**CHIEF SECRETARY, RAJASTHAN (FAX NO. 141-2227114)**

**CHIEF SECRETARY, UTTAR PRADESH (FAX NO.0522-2239283)**

**Sub: Depression over East Rajasthan and adjoining West Madhya Pradesh**

The Depression over West Madhya Pradesh moved nearly westwards with a speed of 13 kmph during last 3 hours and lay centered at 0830 hours IST of today, the 16<sup>th</sup> August over East Rajasthan and adjoining West Madhya Pradesh near latitude 24.7<sup>0</sup>N & longitude 76.5<sup>0</sup>E, 80 km southeast of Kota (Rajasthan), 90 km west of Guna (Madhya Pradesh) and 120 km southeast of Bundi (Rajasthan).

It is very likely to continue to move west-northwestwards and weaken gradually to a well marked low pressure area during next 12 hours.

**Warnings:**

**Rainfall:**

**West Madhya Pradesh:** Rainfall at most places with heavy to very heavy rainfall at isolated places on 16<sup>th</sup> August.

**East Rajasthan:** Rainfall at most places with heavy to extremely heavy rainfall at isolated places on 16<sup>th</sup> August and heavy rainfall at isolated places on 17<sup>th</sup> August.

**West Rajasthan:** Rainfall at most places with heavy to extremely heavy rainfall at isolated places on 16<sup>th</sup> August and very heavy rainfall at isolated places on 17<sup>th</sup> August.

**Gujarat Region:** Rainfall at most places with heavy to extremely heavy rainfall at isolated places on 16<sup>th</sup> August and heavy rainfall at isolated places on 17<sup>th</sup> August.

**Saurashtra and Kutch:** Rainfall at most places with heavy to very heavy rainfall at isolated places on 16<sup>th</sup> & 17<sup>th</sup> August.

**Wind:** Strong wind reaching 20 to 30 kmph gusting to 40 kmph is very likely to prevail around system center over East Rajasthan and adjoining areas of West Madhya Pradesh and Uttar Pradesh.

**System is under continuous surveillance and the next message will be issued at 1430 hours IST of today, the 16<sup>th</sup> August, 2022.**

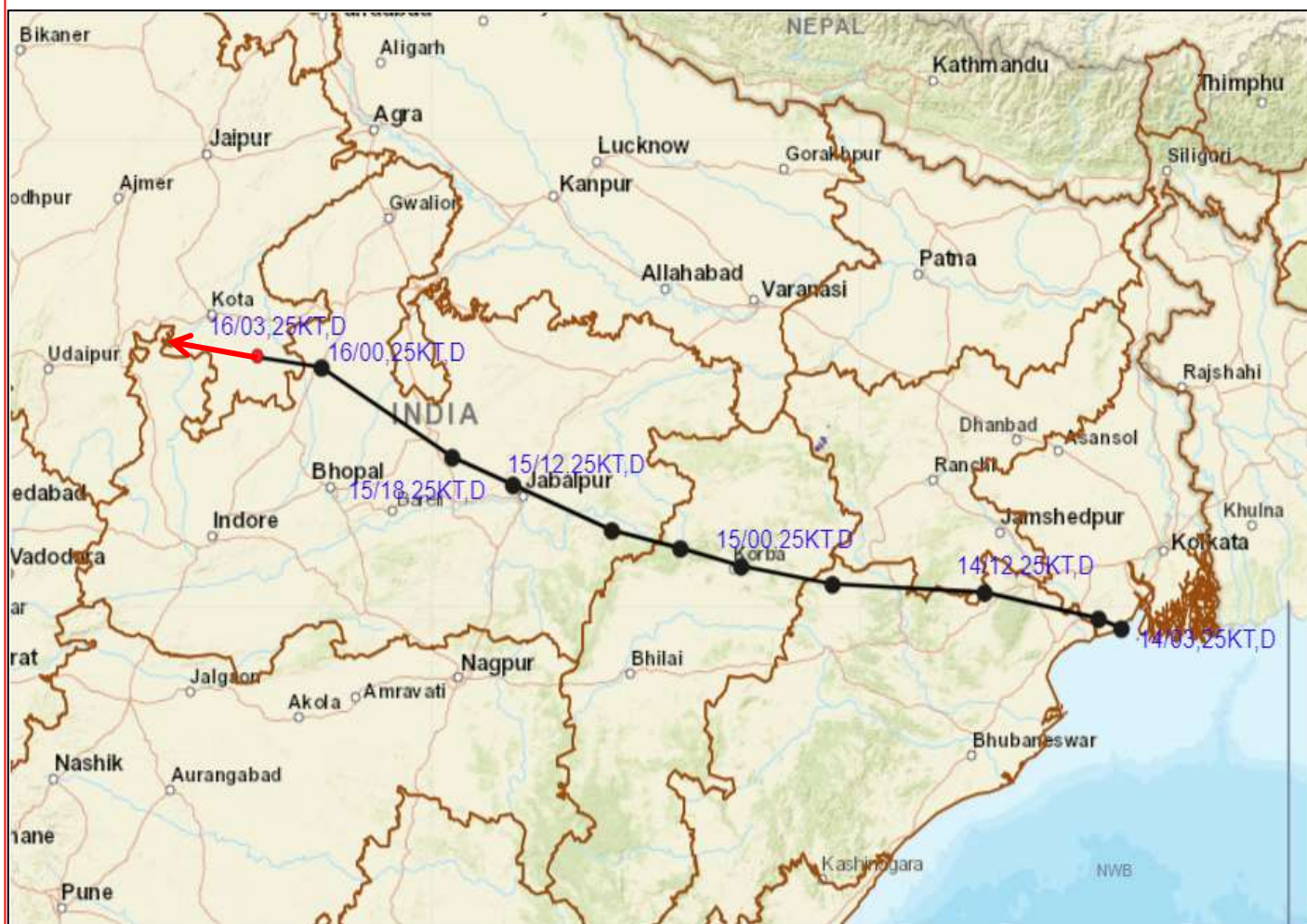
**(DR AK DAS)**  
**Scientist E, Cyclone Warning Division, New Delhi**

**Copy to: ACWC Mumbai/ ACWC Kolkata/ ACWC Chennai/ CWC Bhubaneswar/CWC Visakhapatnam/CWC Ahmedabad/ MO Port Blair/MC Raipur/MC Bhopal/MC Hyderabad/RMC Nagpur/MC Goa/MC Bengaluru/CWC Thiruvananthapuram**

**LEGEND: Heavy Rainfall:** 64.5 to 115.5mm, **Very Heavy Rainfall:** 115.6 to 204.4mm **Most Places:** more than 76% of total stations, **Isolated Places:** Less than 25% of total



## OBSERVED AND FORECAST TRACK OF DEPRESSION OVER EAST RAJASTHAN ADJOINING WEST MADHYA PRADESH BASED ON 0300 UTC OF 16<sup>th</sup> AUGUST, 2022



DATE/TIME IN UTC

IST=UTC + 0530

L: LOW PRESSURE AREA

WML: WELL MARKED LOW PRESSURE AREA

D: DEPRESSION (17-27 KT)

DD: DEEP DEPRESSION (28-33 KT)

CS: CYCLONIC STORM (34-47 KT)

SCS: SEVERE CYCLONIC STORM (48-63KT)

VSCS: VERY SEVERE CYCLONIC STORM (64-89 KT)

ESCS: EXTREMELY SEVERE CYCLONIC STORM (90-119 KT)

SuCS: SUPER CYCLONIC STORM ( $\geq$  120 KT)

● LESS THAN 34 KT

○ 34-47 KT

○  $\geq$  48 KT

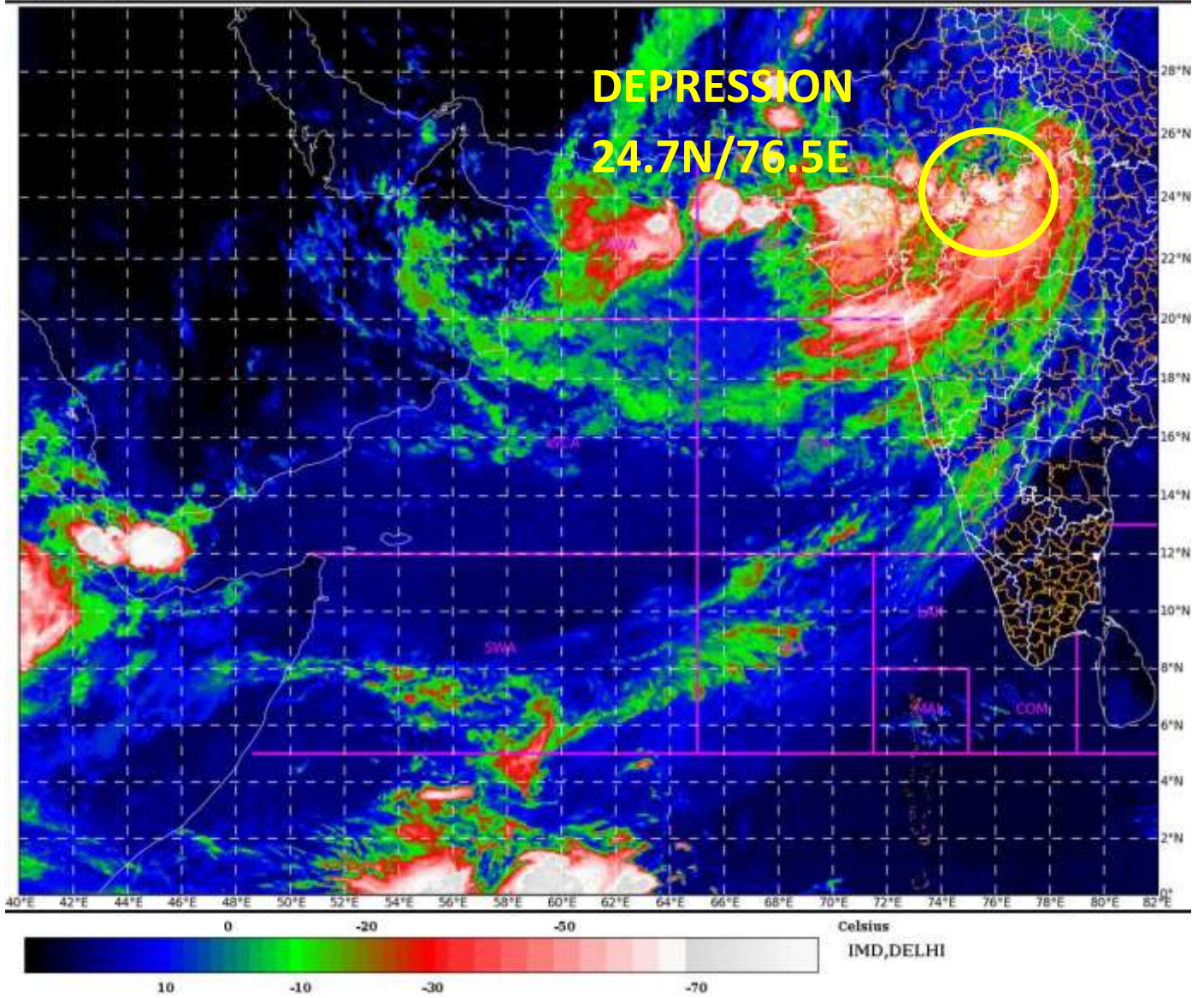
— OBSERVED TRACK

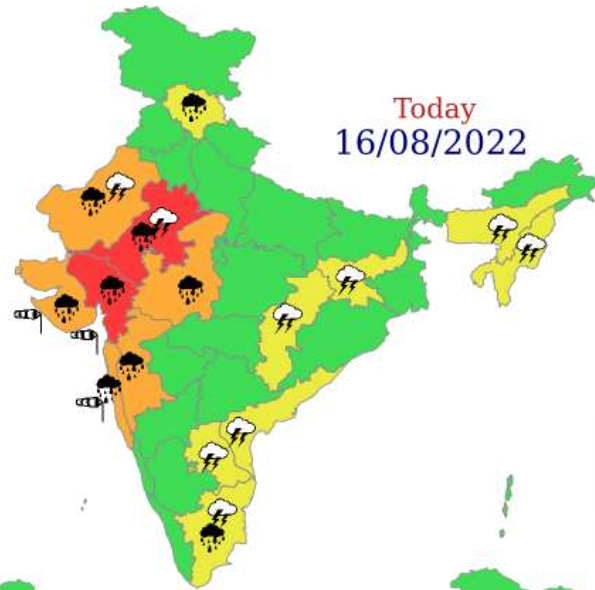
— FORECAST TRACK

▲ CONE OF UNCERTAINTY

SAT : INSAT-3D IMG  
IMG\_TIR1\_TEMP 10.8 um  
ARABIAN\_SEA

16-08-2022/(0500 to 0526) GMT  
16-08-2022/(1030 to 1056) IST





**WARNING**

WARNING (TAKE ACTION)

ALERT (BE PREPARED)

WATCH (BE UPDATED)

NO WARNING (NO ACTION)

